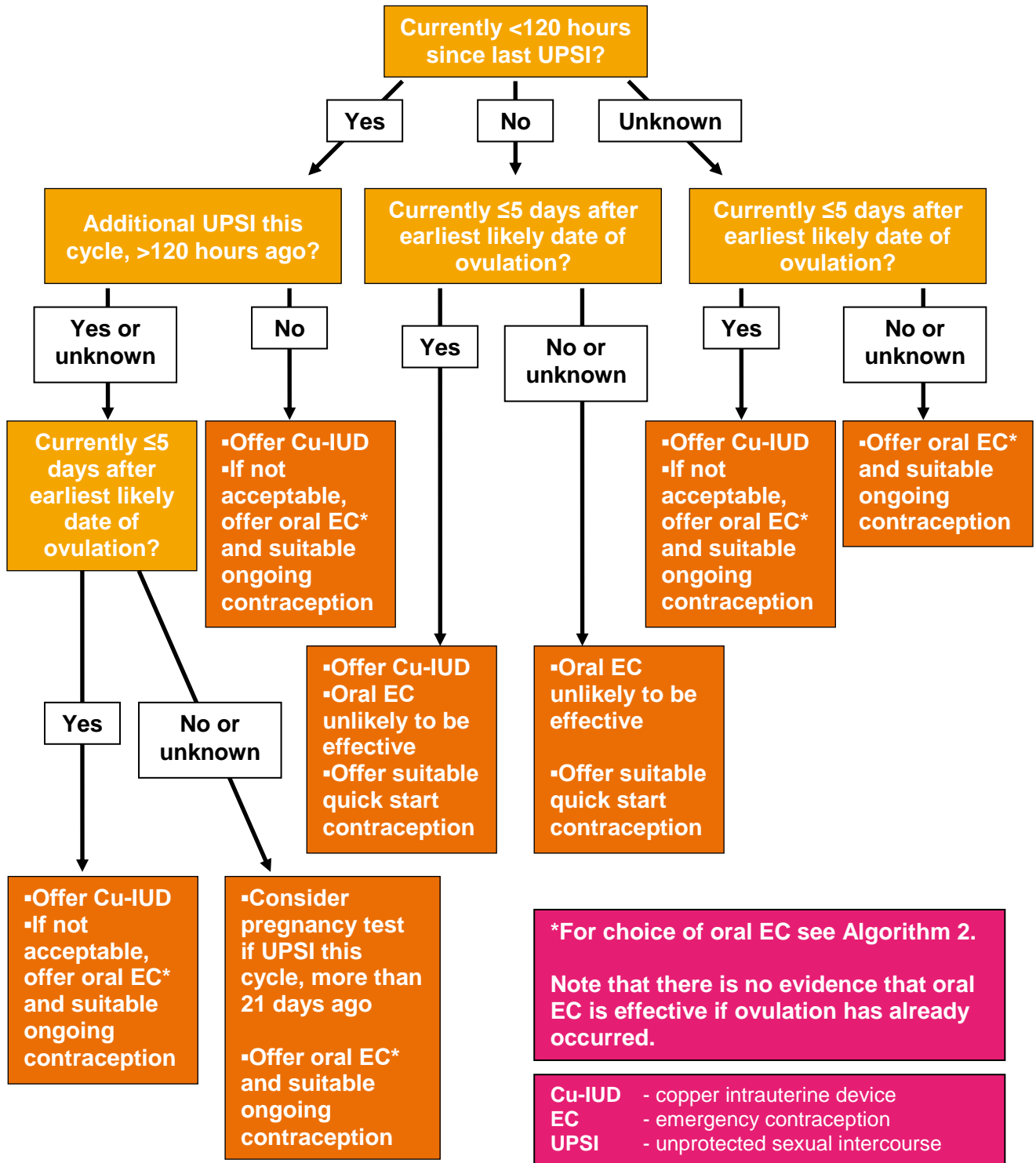
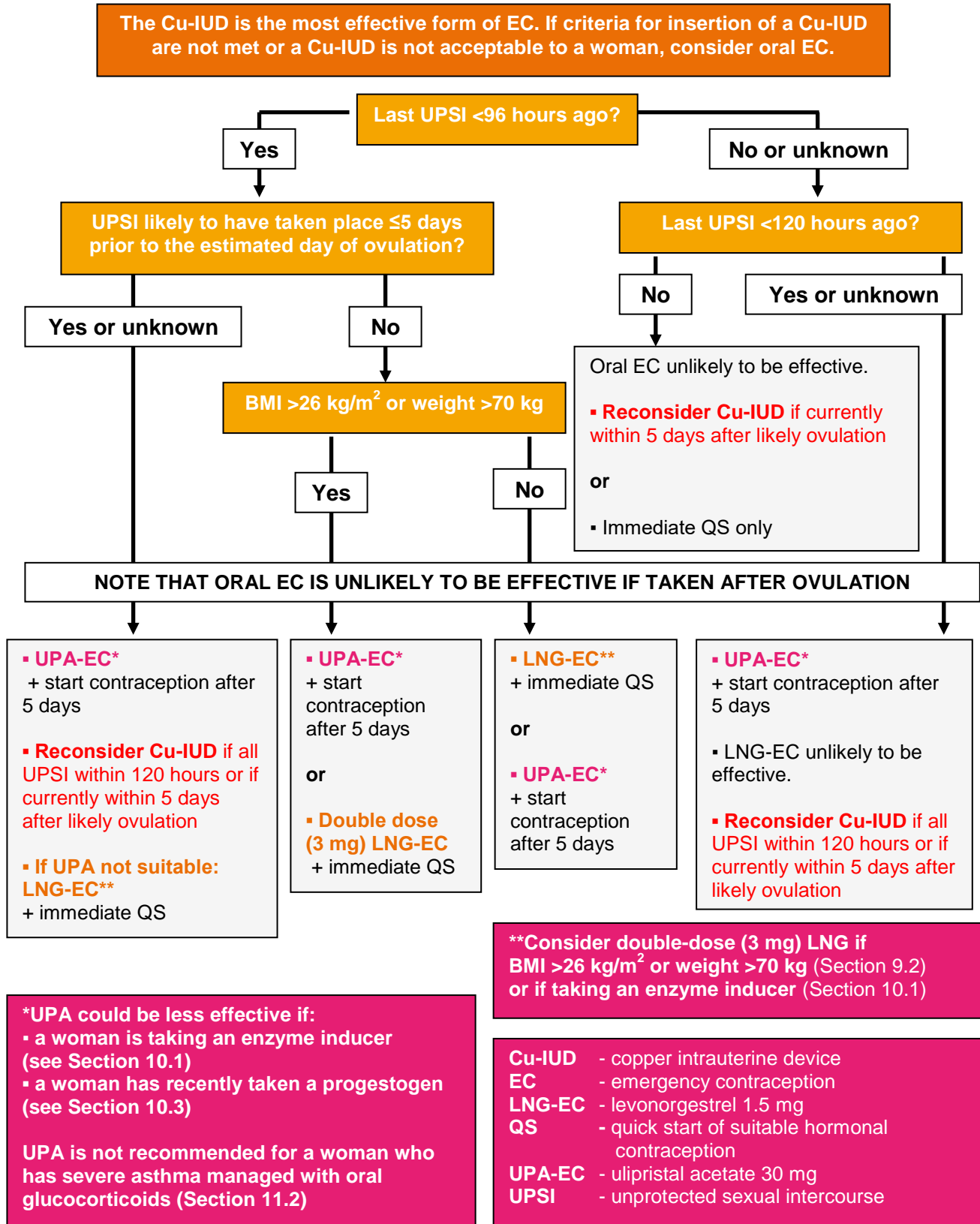


## Decision-making Algorithms for Emergency Contraception

Algorithm 1: Decision-making Algorithm for Emergency Contraception (EC):  
Copper Intrauterine Device (Cu-IUD) vs Oral EC



**Algorithm 2: Decision-making Algorithm for Oral Emergency Contraception (EC):  
Levonorgestrel EC (LNG-EC) vs Ulipristal Acetate EC (UPA-EC)**



**\*\*Consider double-dose (3 mg) LNG if BMI >26 kg/m<sup>2</sup> or weight >70 kg (Section 9.2) or if taking an enzyme inducer (Section 10.1)**

**\*UPA could be less effective if:**

- a woman is taking an enzyme inducer (see Section 10.1)
- a woman has recently taken a progestogen (see Section 10.3)

**UPA is not recommended for a woman who has severe asthma managed with oral glucocorticoids (Section 11.2)**

**Cu-IUD** - copper intrauterine device  
**EC** - emergency contraception  
**LNG-EC** - levonorgestrel 1.5 mg  
**QS** - quick start of suitable hormonal contraception  
**UPA-EC** - ulipristal acetate 30 mg  
**UPSI** - unprotected sexual intercourse