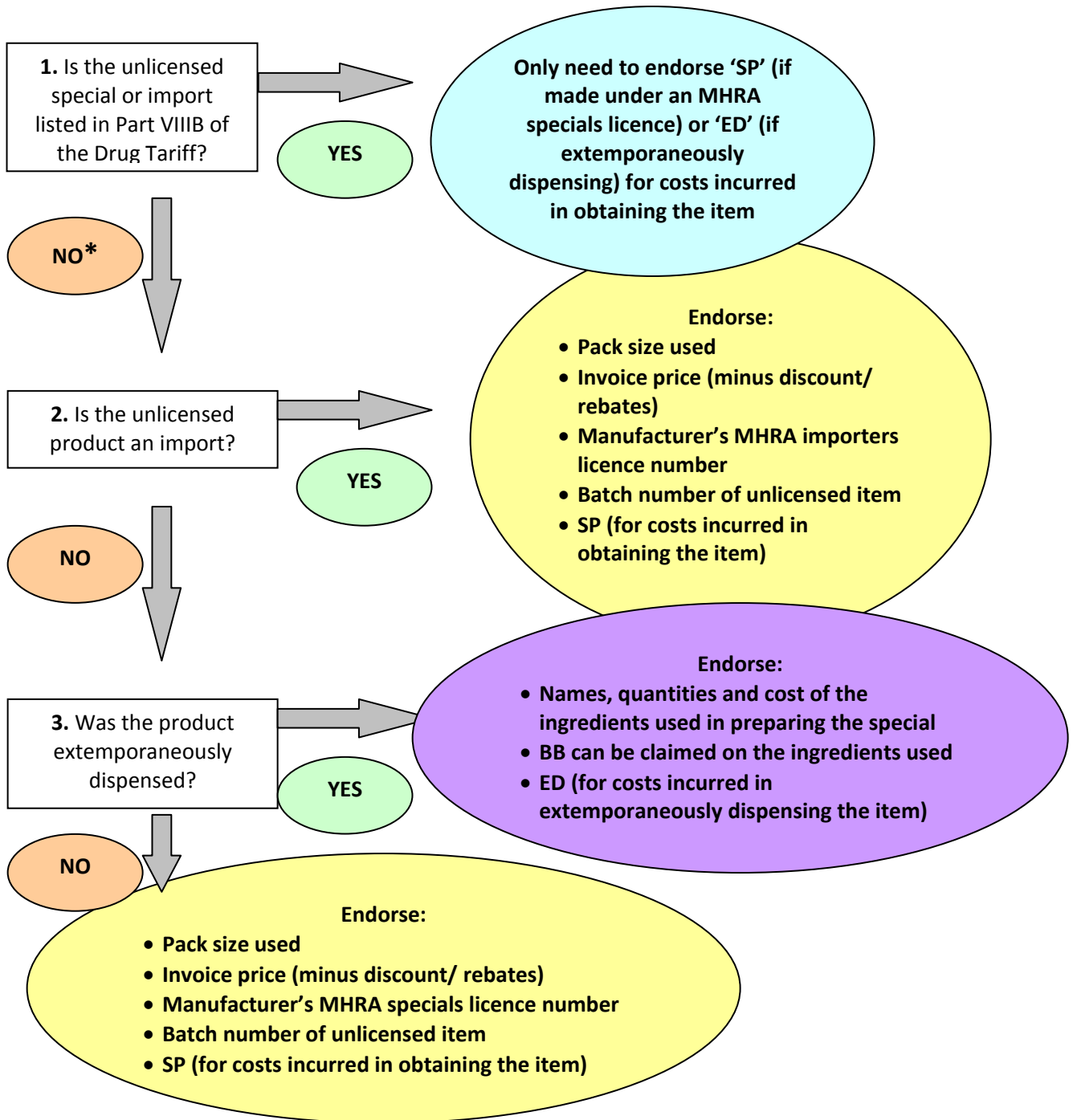


Use the flowchart below to help you identify what to endorse in each situation.



*** Please note:**

For unlicensed specials and imports not in Part VIII B, stamp, date, initial and endorse the Certificate of Analysis (COA)/Certificate of Conformity (COC) with the invoice price less discount and prescriber's details. At the end of each month, a copy of the endorsed COA/COC must be sent to the prescriber's PCT.